

# Industrial LED UV equipment

All new In-Line Series

single phase 220V

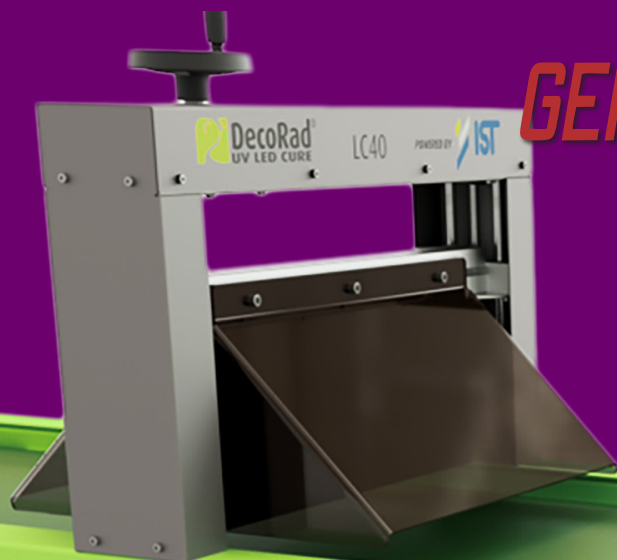
## LED Linemate

The LED Linemate is an industrial production line unit that cures LED Hardwax Oil



## LED LineCure LC40

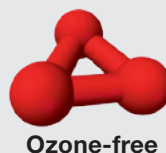
The LC40 is a retrofit LED module mounted on your in use industrial conveyORIZED line



GEN2

GEN2

- Suitable for LED Hardwax Oil
- Including control unit
- 40 cm lamp width
- Height adjustable
- Longlife high-quality LED system 395 nm
- Single phase 220 - 250V 50 / 60 Hz
- Energy Saving Technology
- Ozone-free



Please visit [www.decorad.com](http://www.decorad.com) for more information

On-site UV curing



Public areas



Wood



Mineral



Resilient



# Portable UV curing equipment

## Benefits of UV Floor curing

- Minimal down time
- Eco friendly coatings
- Industrial quality
- Low or no smell
- Floor is ready for immediate use
- Easy to clean
- UV curable coatings & UV curing equipment are worldwide available



## The process in short\*



\*Depending on the type of UV coating this procedure can differ

## UV coating and equipment

On-site UV coatings and lacquers are available for mineral, wood and resilient floors. Coating companies all over the world develop their on-site UV coatings with the use of Decorad UV equipment. Those cooperation's are necessary in order to guarantee floors with industrial quality properties. A proper how-to-operate & safety training is required and is provided by Decorad Systems or one of our local partners. Fast growing markets in on-site UV curing are resilient floors and warehouse line-marking.

Public areas





## Floor curing UV equipment

# GEN6



### Floormate GEN6

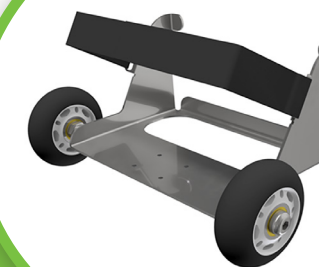
- Single phase electricity
- Motor driven
- Personal safety package included
- 45 cm cure path
- 190 - 250V 50 / 60 Hz
- Durable design, easy to operate
- Flightcase included

**No. 1**  
Contractors  
choice for  
portable UV



### Floorcure 2030

- Handheld and floor curing machine in one
- 220 - 250V 50 / 60 Hz
- 30 cm cure path
- One box light weight
- For WB finishes only
- Build-in speed indication via display
- Self-diagnostic system with display
- Personal safety package included



### Handmate UV1800

- 1800 watt output
- 7 inch bulb / 18 cm
- 110 - 250V 50 / 60 Hz
- 24 ft cable / 8 m
- Lightweight, compact dimming function
- Self-diagnostic system with display
- Ultrasonic sensors for distance control
- Optional support wheel and extension pole
- Personal safety package included

## Handheld UV equipment



### Handmate UV600

- 600 watt output
- 2,5 inch bulb / 6 cm
- 220 - 250V 50 / 60 Hz
- Self-diagnostic system with display
- Lightweight, compact, dimming function
- Very easy lamp change
- Ultrasonic sensors for distance control
- With support wheel and extension pole
- Personal safety package included
- Shutter

